



**Beechboro Primary School
Kindergarten
Information Booklet**

Beechboro Primary School – Kindergarten 2025

Welcome to Beechboro Primary School

Starting kindergarten is a major milestone for you and your child and the start of a new stage of life for all of you. Your child's first years of school will be exciting and engaging and this booklet will help you make the 'kindy' experience at Beechboro Primary School as smooth and enjoyable as possible.

It is recognised that a powerful way young children learn is through play. Play is both active and interactive and helps children learn together. Children use play to develop their relationships, to experiment, imagine, create, practise, problem-solve and role play. 'School Play' is a balance of directed and free play.

We welcome parent/family involvement in our learning program. We encourage you to make regular contact with your class teacher to discuss the activities your child is involved in. Mums, Dads, Grandparents, Carers please come and let your child show you his or her special place. The children and staff would love to have you come and share your talents or experiences with us, so please let us know if there is something you can teach us.

Kindergarten Class Schedule 2025

Kindy session times are as follows;

Monday, Wednesday and odd week Fridays (marked on the planner)

For the first week of school we will have a transition in Kindergarten. *The children will only attend ½ days for the first week.*

Wednesday 5th February
Friday 7th February

8.30-12.00 noon
8.30-12.00 noon



School Times and Dates

Term One 2025	
Staff Return	Monday 3 February
Students Return	Wednesday 5 February
End of Term One	Friday 11 April
Term Two 2025	
Staff and Students Return	Monday 28 April
End of Term Two	Friday 4 July
Term Three 2025	
Staff Return	Monday 20 July
Students Return	Tuesday 21 July
End of Term Three	Friday 26 September
Term Four 2025	
Staff Return	Monday 13 October
Students Return	Tuesday 14 October
End of Term Four	Thursday 18 December
Staff Finish	Friday 19 December



What To Bring To Kindy

Items for student's personal and shared use in the classroom:

Shared Use

- 1 Artline permanent marker black 1.5mm
- 1 0.6 black Artline marker
- 1 small whiteboard eraser
- 1 large box of tissues
- 4 rolls of paper towel
- 4 bottles of pump hand soap
- 1 packet of baby wipes

Personal Use

- 1 **large** school bag (labelled)
- 1 wide brimmed hat (labelled) to be left at Kindy
- 1 change of clothes Summer/Winter (labelled and in a plastic bag)
- 1 library bag (labelled)
- 1 water bottle (labelled)
- 1 lunch box (labelled)



Contributions and Charges

Voluntary Contributions

Contributions for the school year are:

Kindergarten / Pre-Primary students \$50.00 per student

(If your voluntary contributions are paid before the end of February, they are reduced to \$45.00 per student)

While contributions are voluntary the quality of our teaching and learning program will be maximised when each family makes its contribution to the cost of supplementing funding gained from other sources, including the State and Federal Governments.

You can assist the school by paying this voluntary contribution as the monies go towards the cost of materials, services and facilities used by our students.

Preparing for School



There is lots you can do to prepare your child, and yourself, for kindergarten. The first day of school can be an emotional time for parents and children. The more you can help your child to become familiar with the layout of school and what they need to do before day one, the less overwhelming it will be.

BEFORE SCHOOL STARTS

- Show your child where the school is and talk about how you will get there
- Practise things your child will need to do to get ready for school (putting things in their bag, remembering their hat)
- Be positive about starting school and be excited
- Set up a bedtime routine – please make sure child is asleep by at least 7.30pm so they will be ready to join in and enjoy Kindy
- Read to your child every day, reading will support your child's learning
- If your child is interested in writing their name, you can help by showing them the correct lettering. (In the back of this booklet) Please encourage your child to use a capital letter for the first letter of their name and then lowercase letters. Eg. Sam not SAM

Withdrawal and Wait listing – Please let the school office know if your circumstances have changed and you no longer need a place at Beechboro Kindergarten.

Contact Details – Make sure that your contact details are up to date at all times. Please update address / mobile phone number etc as soon as it changes.

Medical Conditions - If your child has a medical condition (Asthma, Allergies, Diabetes etc) please notify the school office and make sure the appropriate paperwork and support plans have been completed.

Important School Information

ARRIVING AT SCHOOL

- It is important for children to feel secure in the school environment. Please make sure your child arrives and is collected at the correct times as children become easily distressed if you are late.
- For student safety we request that your child is dropped off and collected by a parent or authorised adult. Please do not leave your child at the gate.
- Parents and children are asked to wait outside the classroom until the teacher opens the doors at 8.30am
- If you arrive after 8.45am or need to collect your child early - you will need to sign OUT/IN at the school office.
- If another adult is collecting your child s/he must be nominated in writing.
- If you are running late to collect your child please phone and notify the school.

*Children ARE NOT PERMITTED to use the playground equipment unless supervised by a staff member. For student safety please ensure your children (including younger siblings) **DO NOT USE THE EQUIPMENT BEFORE OR AFTER SCHOOL.***

ABSENCES

Whilst Kindergarten is not compulsory, when you enrol your child it is expected that you are committing to regular attendance. If your child(ren) are going to be absent from school, you are required to provide the school with a reason, on the day of absence, or as soon as possible. Beechboro Primary School utilises 'MGMO Outreach' as an SMS reminder system. If your child(ren) are marked absent prior to 10.00am an SMS will be sent to your contact mobile requesting you contact the school. We are also happy to receive notifications via the school email address Beechboro.ps@education.wa.edu.au

The Education Department of WA identifies any student with less than 90% attendance as being a Student At Educational Risk. The school will contact families when student attendance falls below 90% to see if any support can be offered and to discuss strategies to improve attendance. Persistent absence or lateness without reasonable cause will be referred to the Regional Student Engagement Team.

Notification in writing is also required if a parent:-

- wishes to take students on vacation during term time
- wishes a child to be excluded from sport, physical education or any other program
- wishes a child to leave the school grounds

BIRTHDAYS

Children enjoy celebrating their birthday. On or close to the day, you are welcome to bring in small cakes or treats for the class.

HEALTH & HYGIENE

- We ask that all children with long hair keep it tied back, so that it doesn't impede their sight
- In kindergarten we practise regular and frequent hand washing

Beechboro Primary School – Kindergarten 2025

DRESS CODE

Although uniform is not compulsory in Kindergarten, we encourage our kindergarten children to wear the yellow and gold. It makes them feel like they belong to the whole school.

SCHOOL UNIFORM

Yellow Polo Shirt or T Shirt
with or without Logo



Green Shorts / Skort



School Dress



COOLER WEATHER OPTIONS

Long Sleeve Fleece / Microfibre Jumper



Green Fleece Pants / Microfibre Pants



SUN SMART SCHOOL HAT

Green Broad Brimmed Hat



FOOD AND BREAK TIMES

- We ask that parents supply their own child's fruit for morning recess – commencing week 1
- Please help foster independence by sending fruit / vegetable snacks that your child can manage on their own. Please cut apples, oranges and pears if required
- We ask that you do not provide chocolates, lollies, roll-ups, take away food or cool drinks as part of your child's school diet
- Please place the fruit / vegetable for snack time in a separate container
- **Each child will need a clearly labelled container (lunchbox) and drink bottle**
- Lunches will remain in the classroom until lunchtime
- Please make sure your child can manage their own lunch (able to open containers, take lids of bottles)
- Pre-packaged snacks should be limited to 2, your child needs to be able to open the packets independently
- Children only have 30 minutes to eat
- We request that you don't send peanut butter, peanuts or Nutella to school, this will support us in the management of severe allergies. We thank you for your understanding

Beechboro Primary School – Kindergarten 2025

ILLNESS / ACCIDENTS / INJURY

- If your child is ill, we request that you keep them at home to stop the spread of germs
- If students become unwell during the school day, they will be monitored in the classroom or Medical Room for a short period and then parents will be phoned to collect them
- In the event of an accident or injury students will be provided with timely support. Each accident / injury will be treated individually by staff and parents will be notified
- If the injury is minor a note, phone call or email will be provided. If the injury is more significant or requires medical attention, parents or emergency contacts will be phoned

INFECTIOUS DISEASES

Wherever possible we prefer parents to keep their children home if they are ill. This prevents the spread of infectious diseases.

The following summary is provided for parents and is taken from Health Department literature. Always seek medical advice for your child if they are ill.

Head Lice:



What are head lice? Head lice are tiny insect parasites that live on the human head, feeding on the scalp several times a day. Head lice reproduce by laying their eggs (nits) on the hair shaft close to the scalp. They are not dangerous, don't carry diseases and are not a sign of poor hygiene, however students must be excluded from school when head lice are detected. Re-entry is dependent on appropriate treatment.

Chicken Pox:



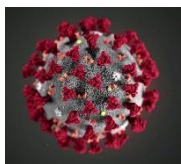
Exclude from school. Re-admit when well and/or 5 days after rash appear and until blisters form crusts.

Conjunctivitis:



Exclude from school until discharge from eyes has ceased. Contacts not to be excluded.

COVID – 19



Exclude from school for 5 days minimum or until acute symptoms are gone.

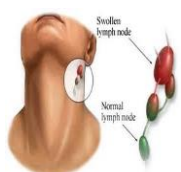
Hand, Foot and Mouth:



Exclude from school until the blisters have burst and are encrusted. Contacts not to be excluded.

Glandular Fever:

Exclude from school while symptoms remain.



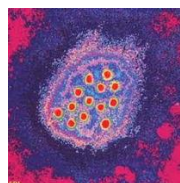
Beechboro Primary School – Kindergarten 2025

German Measles – Rubella:



Exclude from school until at least 4 days after the rash onset,
Re-admit on recovery.

Hepatitis (infective):



Exclude from school. Re-admit on medical certificate of recovery or when symptoms have subsided but not before 7 days after onset of jaundice. Contacts not to be excluded.

Impetigo – school sores:



Red weeping spots. Re-admit to school if under treatment. Sores must be covered.

Meningitis:



Exclude from school. Re-admit when well.

Symptoms – vomiting, fever, headache, stiff neck, light aversion, drowsiness, joint pain, rash, irritability, confusion and diarrhoea. These symptoms may not occur at the same time.

Measles:



Exclude from school.

Re-admit when well and/or at least 9 days after onset of symptoms.
Contacts not to be excluded.

Ringworm:



Exclude from school.

Re-admit after treatment has commenced.
Contacts not to be excluded.

Parvovirus B19 (known as Slapped Cheek):

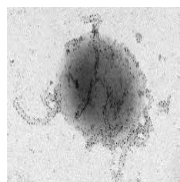


Do not exclude from school. Symptoms – include fever, red cheeks and neck, itchy lace-like rash on the body. Not infectious after the rash appears.

(Not caused by the same parvovirus that infects dogs)

NB: Pregnant women who may be exposed should consult their doctor.

Whooping cough:



Exclude from school.

Re-admit after 14 days from onset of cough or 5 days after starting antibiotics

Beechboro Primary School – Kindergarten 2025

LIBRARY

We visit the school library once a week. Each child may borrow a book each week and return it the next. Children must have a library bag, big enough to hold a picture book if they wish to borrow.

MONEY

If your child has money for excursions etc please place the correct money in an envelope with your child's name and what the money is for clearly written on the front.

NO SMOKING

All government buildings and grounds are smoke free zones, in accordance to the Occupational Health, Safety and Welfare Act 1987. We request that adults respect this and not smoke at any of the school events.

SHOES

Children need to wear appropriate footwear for play. Shoes need to be firm fitting. Please do not send children in scuffs, slip on sandals or thongs.

VALUABLES

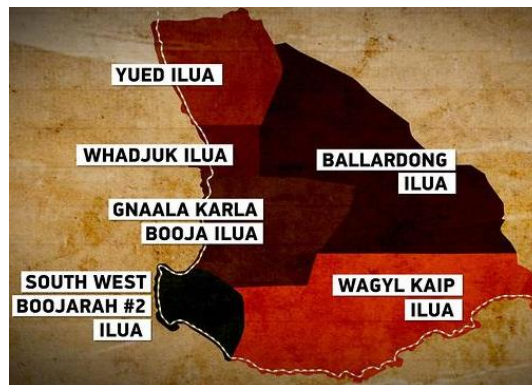
Please do not allow your child to bring valuables to school, including toys, cards and jewellery. We cannot be responsible for them.



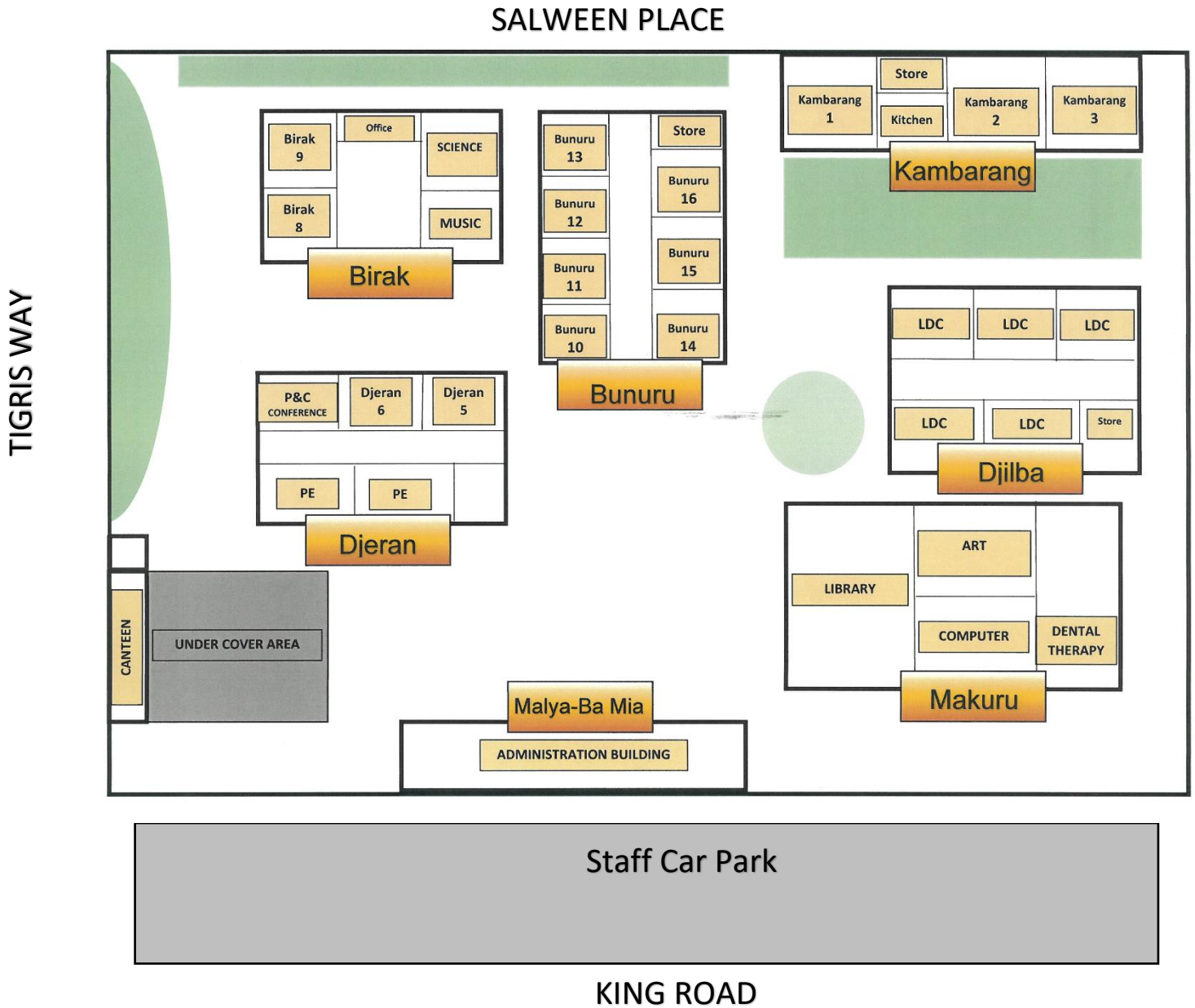
Acknowledgement of Country

An Acknowledgment of Country is a way of demonstrating awareness of and respect for Aboriginal protocols and for the Aboriginal people on whose land a school is located.

We acknowledge the Whadjuk Noongar people as the traditional custodians of this country and its waters and that Beechboro Primary School stands on Noongar country. We pay our respects to Noongar elders past, present and emerging. We acknowledge their wisdom and tradition in our teaching and cultural knowledge activities.



School Map



Aa Bb Cc Dd

Ee Ff Gg Hh Ii

Jj Kk Ll Mm Nn

Oo Pp Qq Rr

Ss Tt Uu Vv

Ww Xx Yy Zz

0 1 2 3 4 5

6 7 8 9

Aa

Bb

Cc

Dd

Ee

Ff

Gg

Hh

Ii

Jj

Kk

Ll

Mm

Nn

Oo

Pp

Qq

Rr

Ss

Tt

Uu

Vv

Ww

Xx

Yy

Zz

0

1

2

3

4

5

6

7

8

9